



Airwave Survey

Use this guide to conduct an airwave survey to confirm the wireless security settings of your home network.

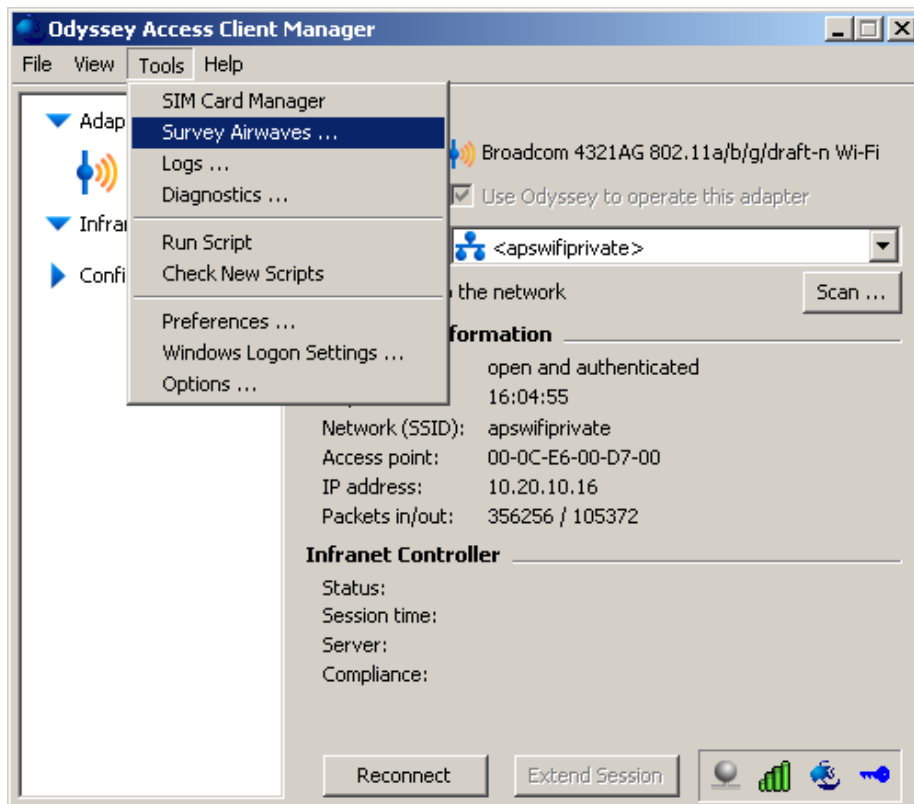


Please make sure your wireless card is turned on before beginning this guide!

Your wireless button must be blue. The button is above the F4 key on the touch panel.

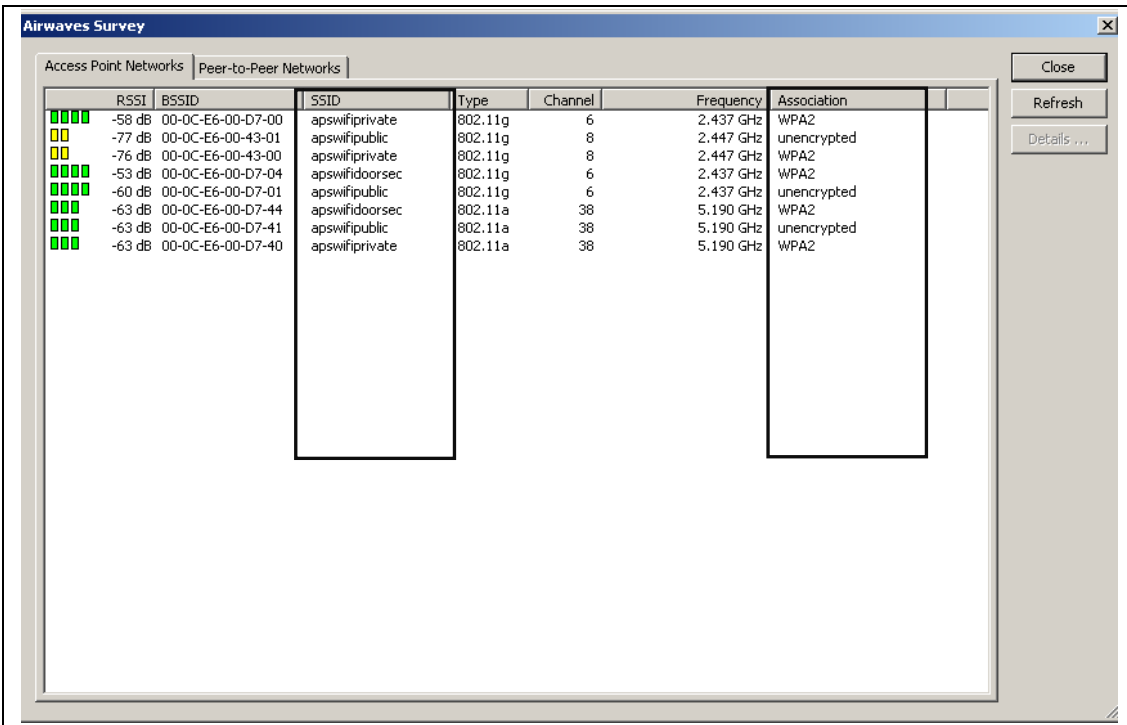


Double-click the Odyssey Access Client icon in the system tray.



Select Tools

Select Survey Airwaves



The Airwaves Survey window opens. Locate your network's name (SSID) and record the Association information for that network.

Click Close.

Please bring your network name (SSID), Association method (none/unencrypted, WEP, WPA, WPA2) and the password/pass-phrase/key to the Helpdesk so we can assist you further in getting your APS-provided laptop working with your home network.