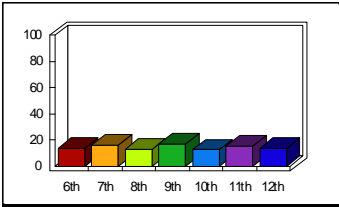


# Item Analysis Graph Report

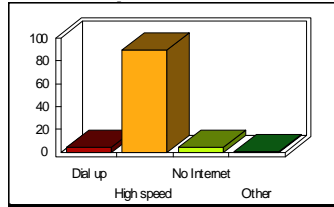
## Chlds grade



Mean: -

Response	Percent
6th	13.91
7th	16.27
8th	13.12
9th	17.06
10th	12.60
11th	15.22
12th	13.65

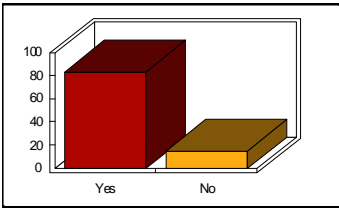
## Type of internet



Mean: 2.01

Response	Percent
Dial up	4.20
High speed	90.03
No Internet	3.94
Other	0.79

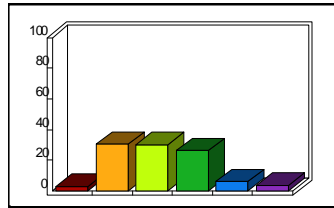
## Wireless network



Mean: 1.15

Response	Percent
Yes	83.46
No	14.96

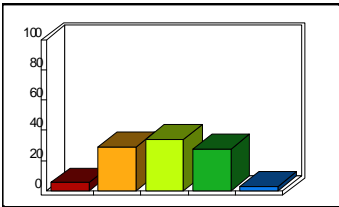
## Time on homework



Mean: 3.12

Response	Percent
None	2.89
<30 minutes	30.45
31-45 minutes	30.18
46-90 minutes	26.25
91-120 minutes	6.04
120 minutes +	3.41

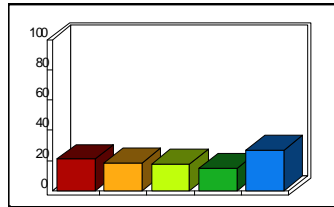
## How often used for



Mean: 2.94

Response	Percent
Not at all	5.25
1-2 days per week	29.13
3-4 days per week	34.12
5-6 days per week	27.56
7 days per week	2.89

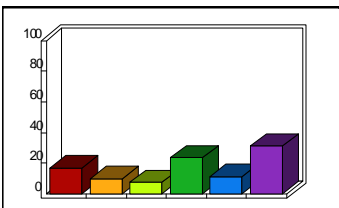
## How often used for



Mean: 3.09

Response	Percent
Not at all	20.73
1-2 days per week	18.37
3-4 days per week	17.59
5-6 days per week	14.70
7 days per week	27.03

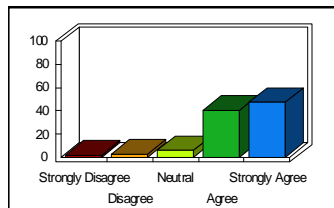
## How often ask child to



Mean: 3.97

Response	Percent
Never	16.54
Once a month	9.71
Twice a month	7.35
Once a week	23.36
Twice a week	11.29
Three or more times a week	30.97

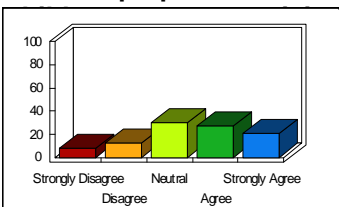
## Child Understands



Mean: 4.30

Response	Percent
Strongly Disagree	1.84
Disagree	2.89
Neutral	6.30
Agree	40.68
Strongly Agree	47.24

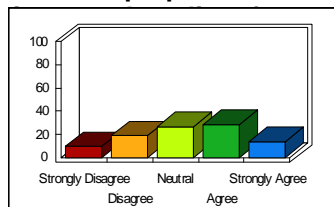
## Use of laptop has allowed



Mean: 3.40

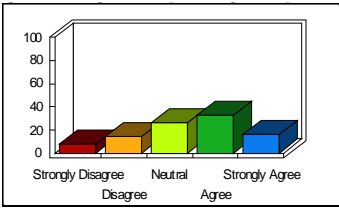
Response	Percent
Strongly Disagree	7.87
Disagree	12.86
Neutral	30.18
Agree	27.30
Strongly Agree	20.47

## Use of laptop has



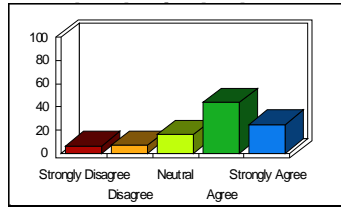
Response	Percent
Strongly Disagree	9.71
Disagree	19.16
Neutral	26.77
Agree	28.61
Strongly Agree	13.91

**1-1 laptop program**



Response	Percent
Strongly Disagree	7.87
Disagree	14.44
Neutral	26.51
Agree	33.07
Strongly Agree	16.54

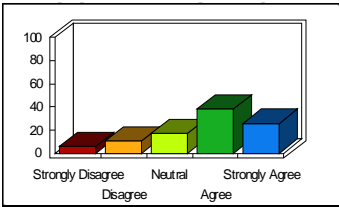
**1-1 laptop program giving**



Response	Percent
Strongly Disagree	6.56
Disagree	6.82
Neutral	16.01
Agree	44.09
Strongly Agree	24.93

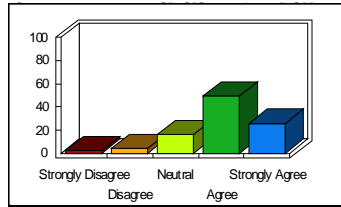
Mean: 3.75

**Laptop has helped child**



Response	Percent
Strongly Disagree	6.30
Disagree	10.76
Neutral	16.80
Agree	38.58
Strongly Agree	25.98

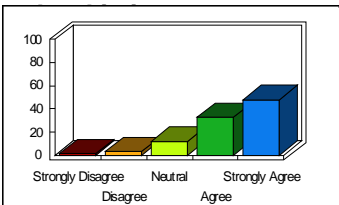
**Child adequately trained**



Response	Percent
Strongly Disagree	2.10
Disagree	4.46
Neutral	16.27
Agree	49.34
Strongly Agree	25.98

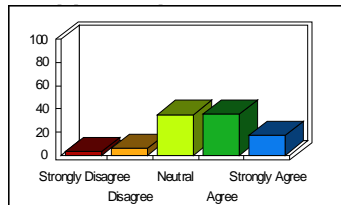
Mean: 3.94

**Filtering at home &**



Response	Percent
Strongly Disagree	1.31
Disagree	3.41
Neutral	12.07
Agree	33.07
Strongly Agree	48.03

**School handled laptop**

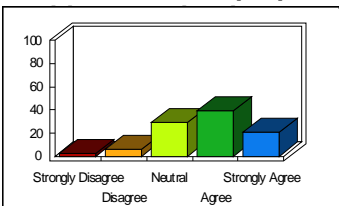


Response	Percent
Strongly Disagree	3.15
Disagree	5.77
Neutral	35.17
Agree	35.43
Strongly Agree	17.06

Mean: 4.26

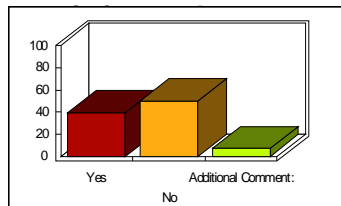
Mean: 3.60

**School handled laptop**



Response	Percent
Strongly Disagree	2.10
Disagree	5.77
Neutral	28.87
Agree	39.11
Strongly Agree	21.00

**Social network**

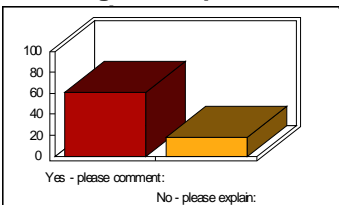


Response	Percent
Yes	39.37
No	49.87
Additional Comment:	7.09

Mean: 3.73

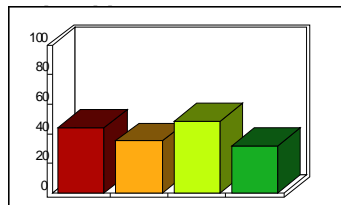
Mean: 1.66

**Filtering level options are**



Response	Percent
Yes - please comment:	60.89
No - please explain:	17.59

**Additional rules about**



Response	Percent
Where the laptop can be used - supervision	44.09
Where the laptop can be used - safety	35.17
How much time can spend using it	48.29
When network is available to them	32.02

Mean: 1.22

Mean: -